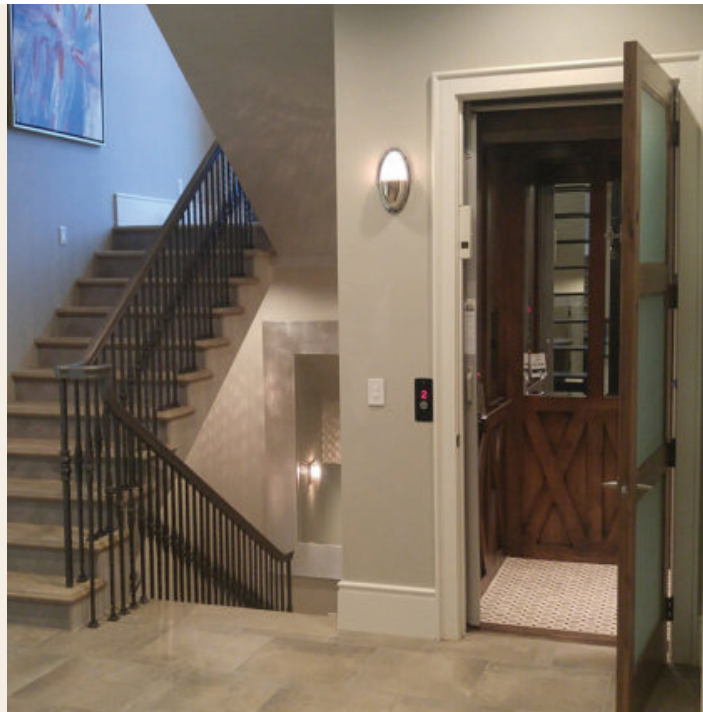
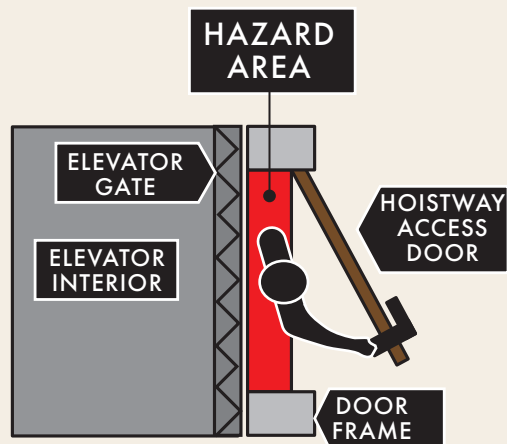


CHANGES TO CODE

In 2016, the ASME A17.1 2016 Section 5.3 Residential Elevator Safety Code was updated in response to safety concerns regarding the well-being of small children.



HOME ELEVATOR SAFETY NOTICE

Contact:

Country Home Elevator
1549 E. 559th Rd.,
Brighton, MO 65617

Email: info@chelevator.com

Phone: 417-376-4009

Toll Free: 800-898-5090

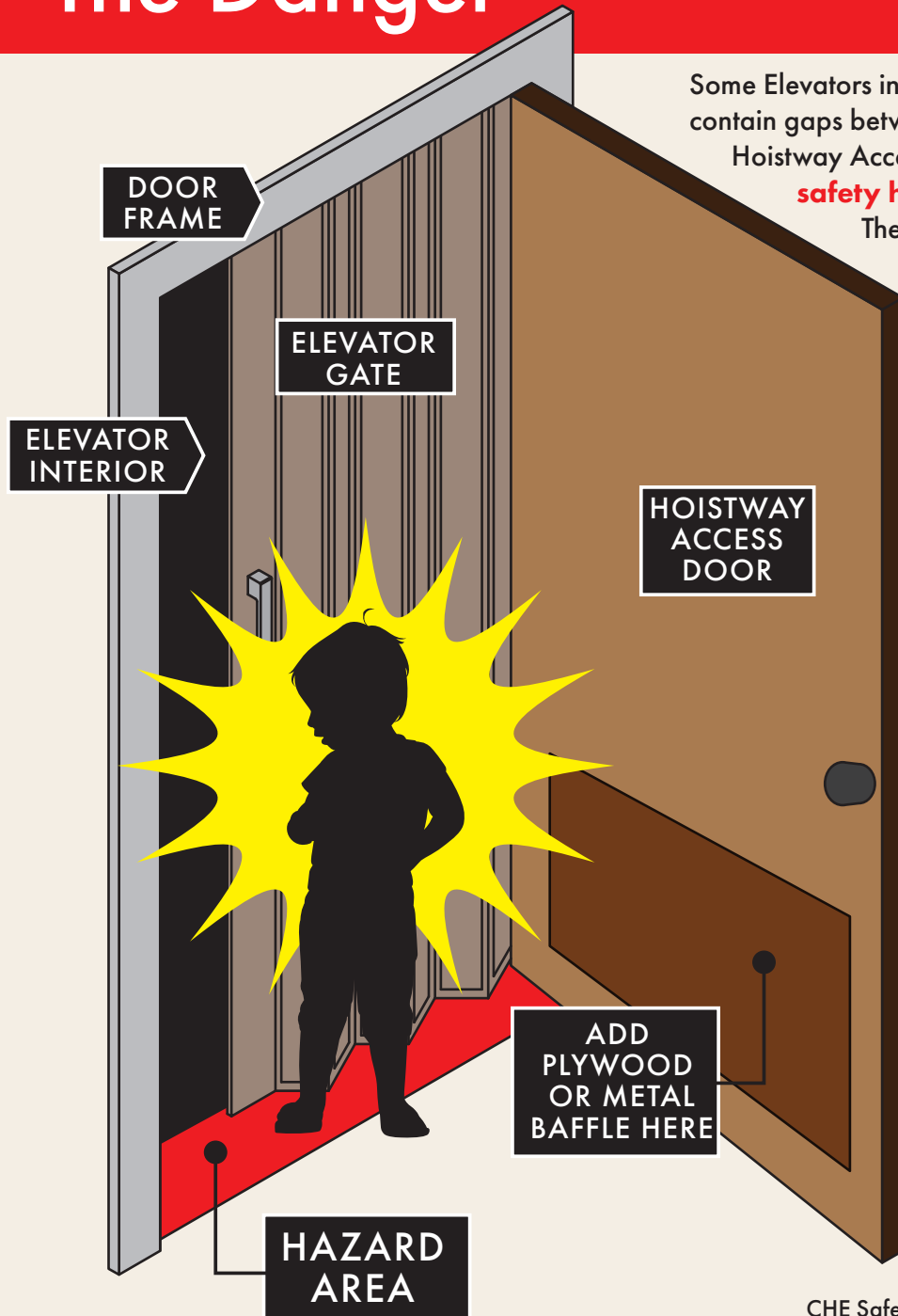


CountryHomeElevator.com



The Danger

Your Options



Some Elevators installed prior to 2016 may contain gaps between the Elevator Gate and Hoistway Access Door that can be a **safety hazard to small children.**

There have been reports in recent years wherein children who became entrapped between the doors suffered fractures, traumatic asphyxia, chronic injuries, or even death. Country Home Elevator takes this matter very seriously and has developed options to reduce or restrict the space.

NOTICE

To comply with the ASME A17.1 2016 Section 5.3 Code, the gaps on all elevators we service shall **not exceed 4 inches.**

If your personal home elevator has a gap of more than 4 inches, Country Home Elevator has options to **make your home elevator safer.** Contact us to learn more about the following options:

	PRICE PER DOOR
1. Plywood sheets on the hoistway doors at all landings. Free material and installation instructions. Call for details.	Free Materials
2. Plywood with custom size and finishes	\$78
3. Metal angle baffles screwed to all doors	\$149
4. Full height baffles applied to all doors *Full code compliance	\$225
5. Light rays on each doorway	Site Specific Quote
6. Flush Door jambs and Doors *Full code compliance	Site Specific Quote
7. Custom Solutions quoted per each door	Site Specific Quote
8. Caution Stickers	FREE

CHE Safety Notice 022020

 **COUNTRY HOME**
Elevator & Stair Lift